

Unopex B 230

Pilot Scale Spray Dryer



B 230 Pilot Scale Spray Dryer

For small scale productions and scale-up studies

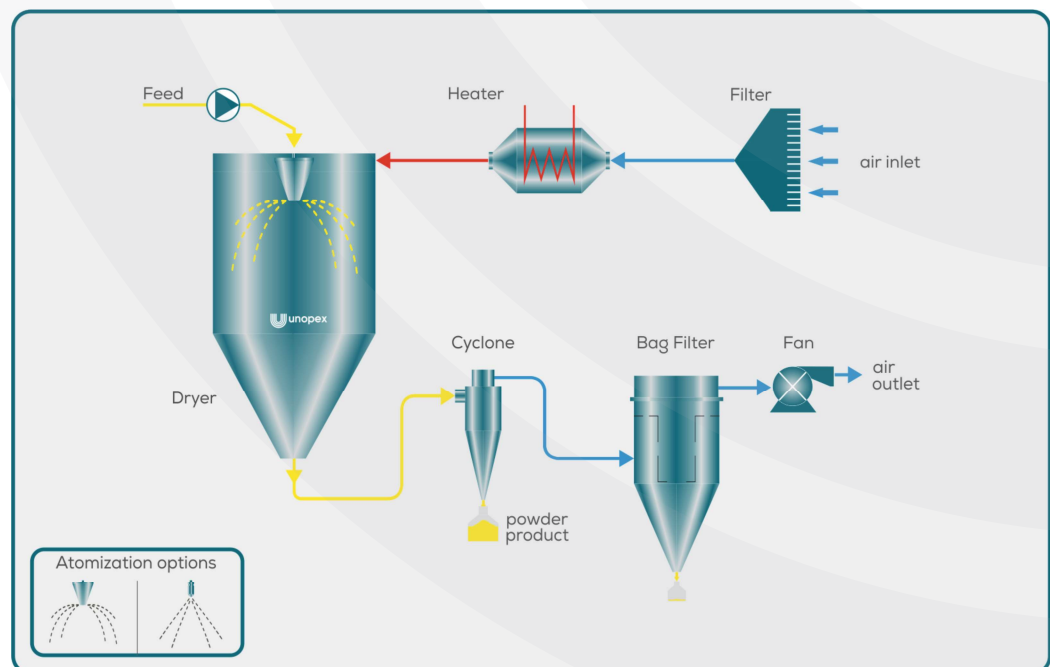
Unopex designs and manufactures spray dryers from lab scale research and development applications to full production scale.

Unopex B 230 Pilot Scale Spray Dryer has been designed for small scale productions and scientific test works in the universities and R&D departments.

Technical Specifications

Model	Unopex B 230
Evaporating capacity	0.5 - 6 kg/h (water)
Drying air inlet temperature	max. 350 °C
Feed pump	peristaltic, variable speed
Configuration	co-current / counter-current
Atomization system	2-fluid nozzle / rotary atomizer
Material of construction	stainless steel 1.4401- 1.4404
Heating system	electrical, PID controlled
Operating panel	touchscreen
Computer connection	data transfer with ethernet or USB
Dimensions (LxWxH)	2.0x1.5x2.5 m

Flow Chart



Fields of Application

- Foodstuffs
- Plant Extracts
- Pharmaceuticals
- Nutraceuticals
- Flavours and Colourings
- Fruit and Vegetable Extracts
- Milk and Egg Products
- Cosmetics
- Biochemicals
- Fine Chemicals
- Ceramics and Advanced Materials
- Polymers and Resins



Standard Equipments

- Drying chamber
- Cyclone with powder container
- Feed tank
- Peristaltic feed pump
- Two-fluid nozzle, co-current
- Inlet filter
- Electrical air heater
- Bag filter
- Pneumatic hammer
- Fan and ducts
- Touchscreen operator panel
- Support structure



Optional Equipments

- Rotary atomizer
- Two-fluid nozzle, counter-current
- Explosion venting system
- Explosion suppression system
- Hepa filters
- Air broom
- CIP system
- Wet system
- GMP documentation
- Fan noise attenuation



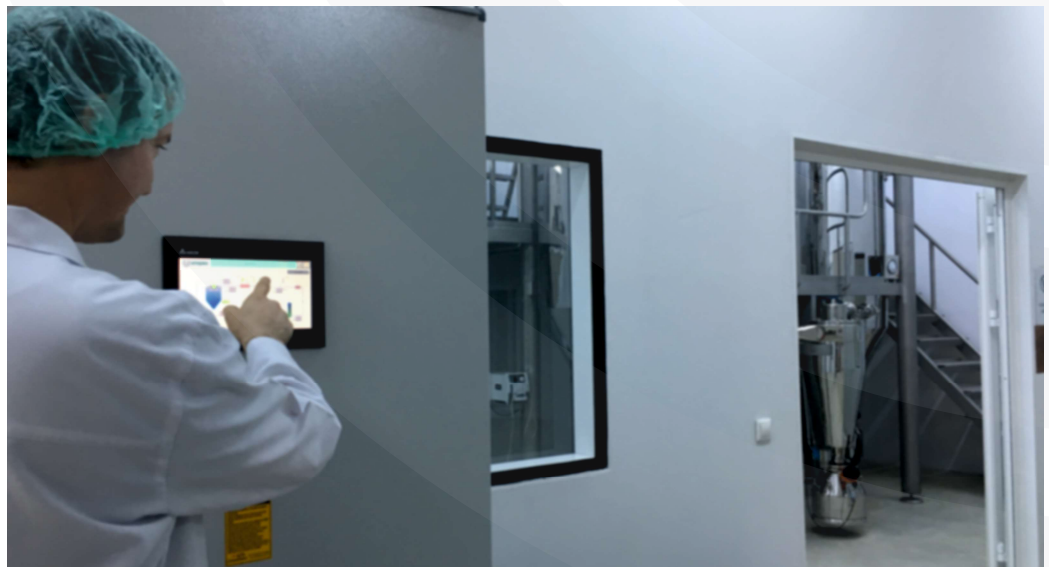
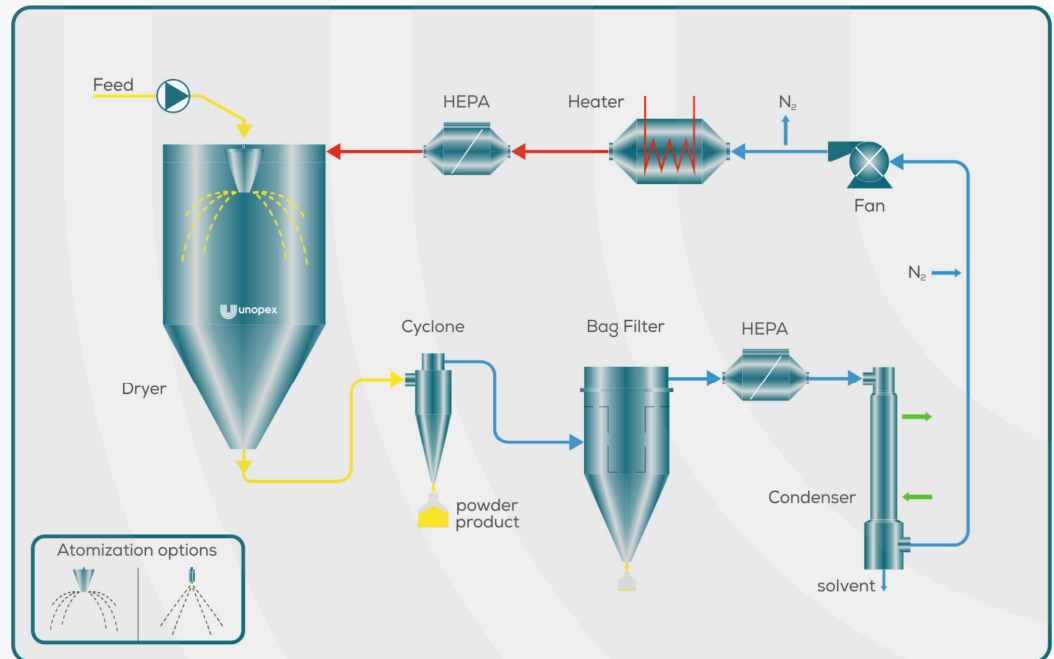
B 230-C Closed Cycle Spray Dryer

Precisely tailored to your needs

Unopex B 230-C Closed Cycle Spray Dryers are particularly used for spray drying of feeds containing organic solvents or where the product must not contact oxygen during drying. Drying takes place in an inert gas atmosphere where nitrogen recycles.

Closed cycle spray dryers are gas and powder tight and are designed according to the strictest safety standards. The inflammable solvent vapors are fully recovered in liquid form.

Flow Chart



Closed Cycle Configuration

- Drying under N₂ atmosphere
- ATEX
- Hepa filters
- Rupture disk
- CIP (clean-in-place)
- CE/GMP

Industries

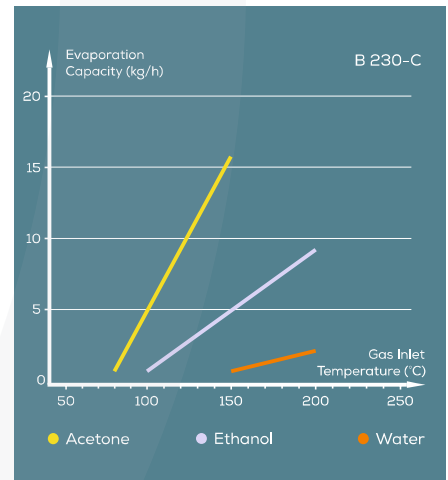
- Pharma
- Food
- Cosmetics
- Chemicals
- Metallurgy
- Academia

Organic solvents

- ethanol
- methanol
- acetone
- ethyl acetate

Benefits

- enables to work with 100% organic solvents
- enables to work with water/solvent mixtures
- safe operation under inert conditions
- minimal inert gas consumption due to closed cycle
- safe and explosion free working conditions due to real time oxygen concentration control





UNIT OPERATIONS EXPERT
IN HEAT AND MASS TRANSFER

-  Izmir / Turkey
-  +90 232 479 80 17
-  unopex@unopex.com
-  www.unopex.com



 unopex® is a division of  BAKON